

PART OF THE SECTION 19, T.7N., R.1W., S.L.B. & M.  
DEER CREST SUBDIVISION PHASE 2, 1ST AMENDMENT

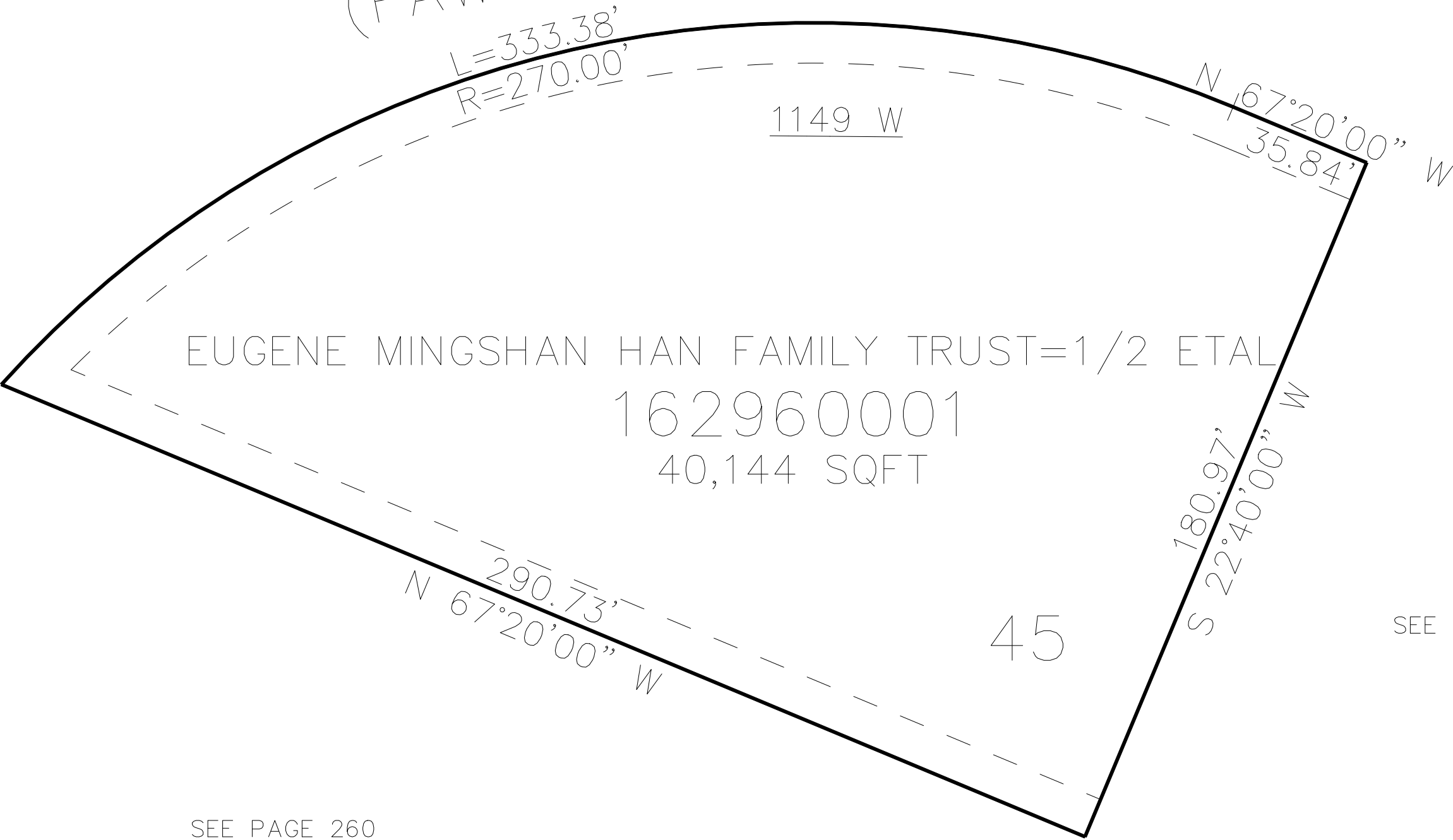
IN PLEASANT VIEW CITY

TAXING UNIT: 11

SCALE 1" = 30'

SEE PAGE 261

4100 NORTH ST  
(FAWN DRIVE)



SEE PAGE 261

SEE PAGE 260

10' UTILITY & DRAINAGE EASEMENTS EACH  
SIDE OF PROPERTY LINES AS INDICATED  
BY DASHED LINES EXCEPT AS OTHERWISE  
SHOWN.

FOR COMPLETE ENG DATA SEE  
ORIGINAL DEDICATION PLAT IN  
BOOK 71, PAGE 36 OF RECORDS.